

8	9	10	11
4	5	6	7
1	2	3	

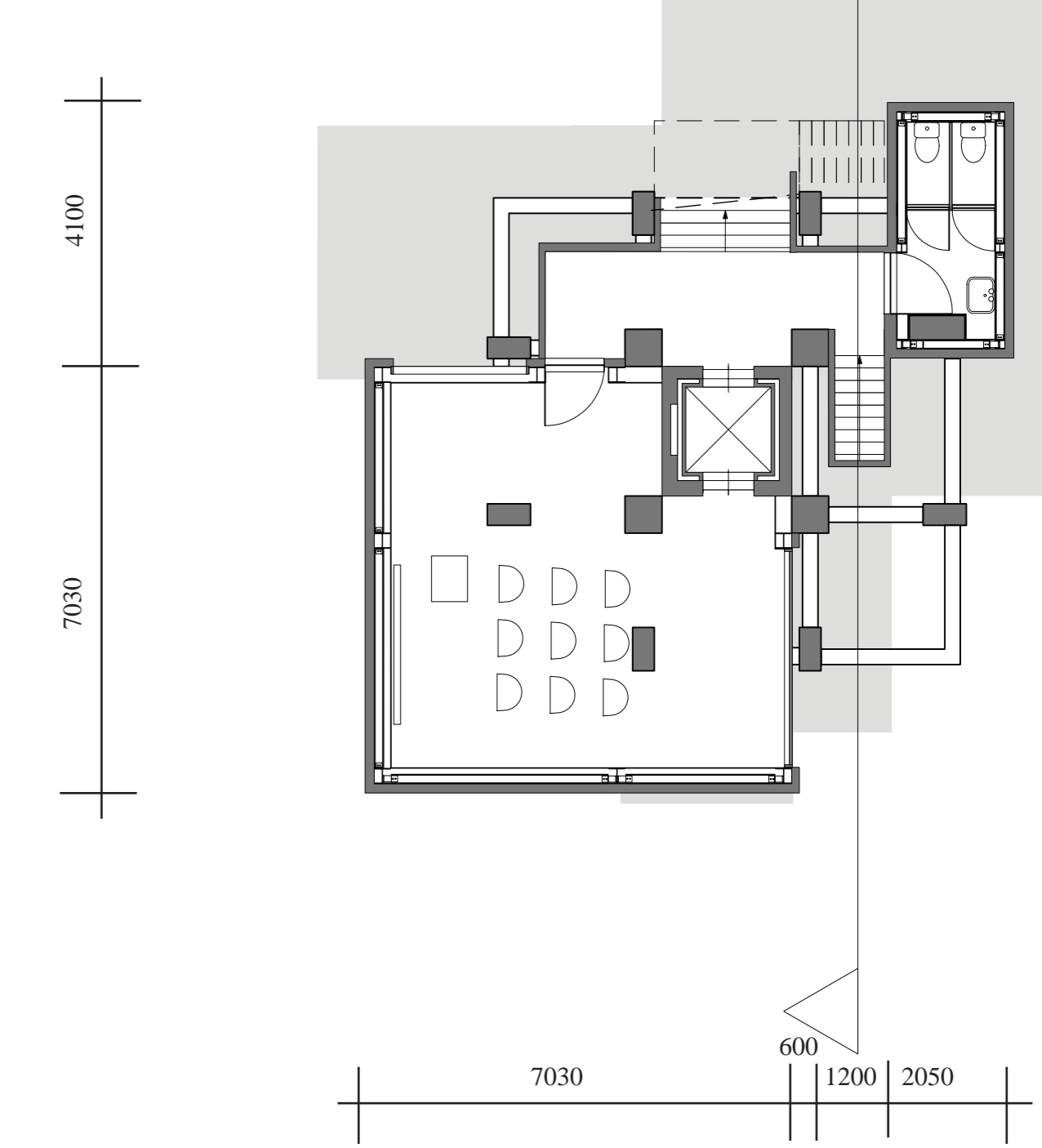
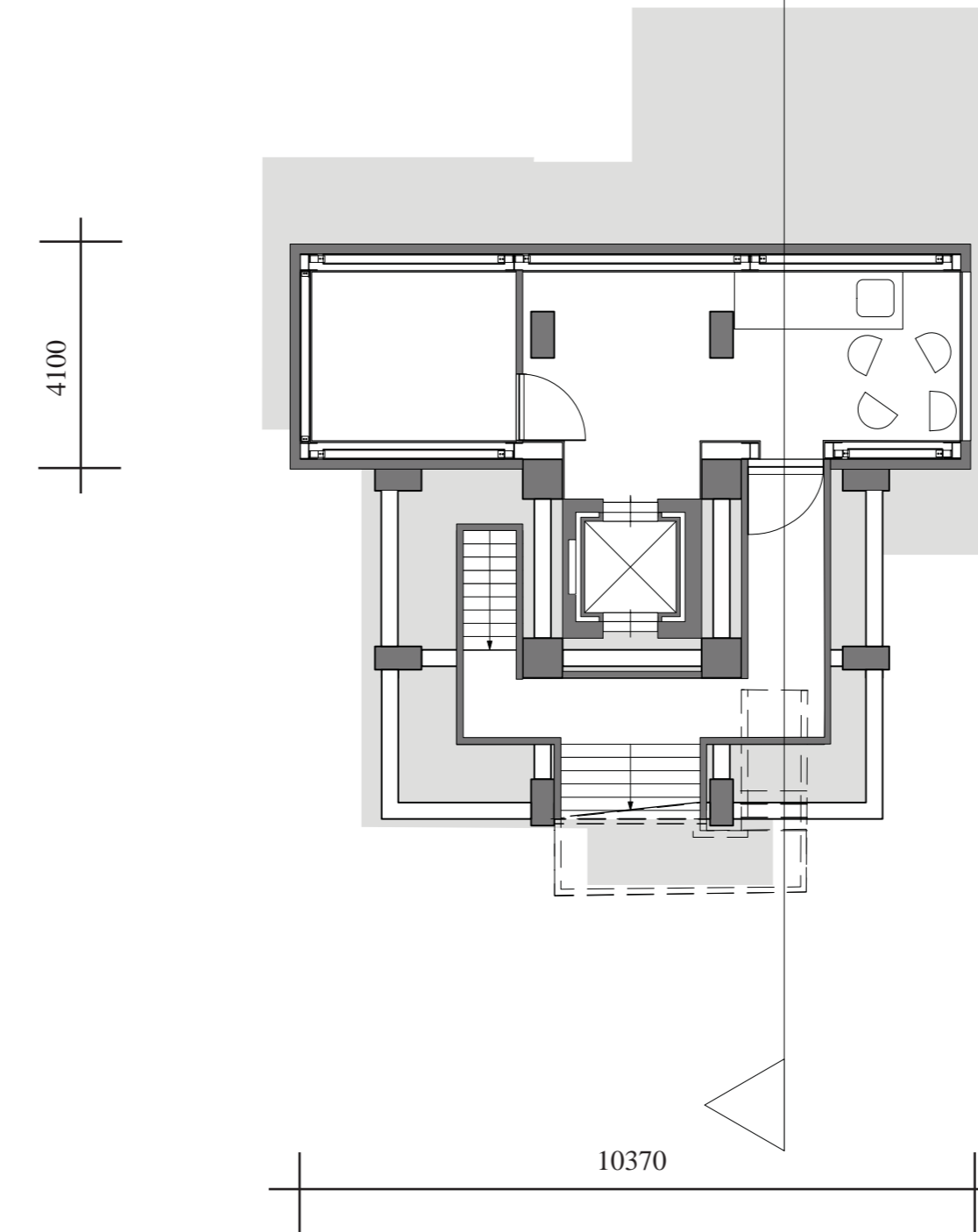
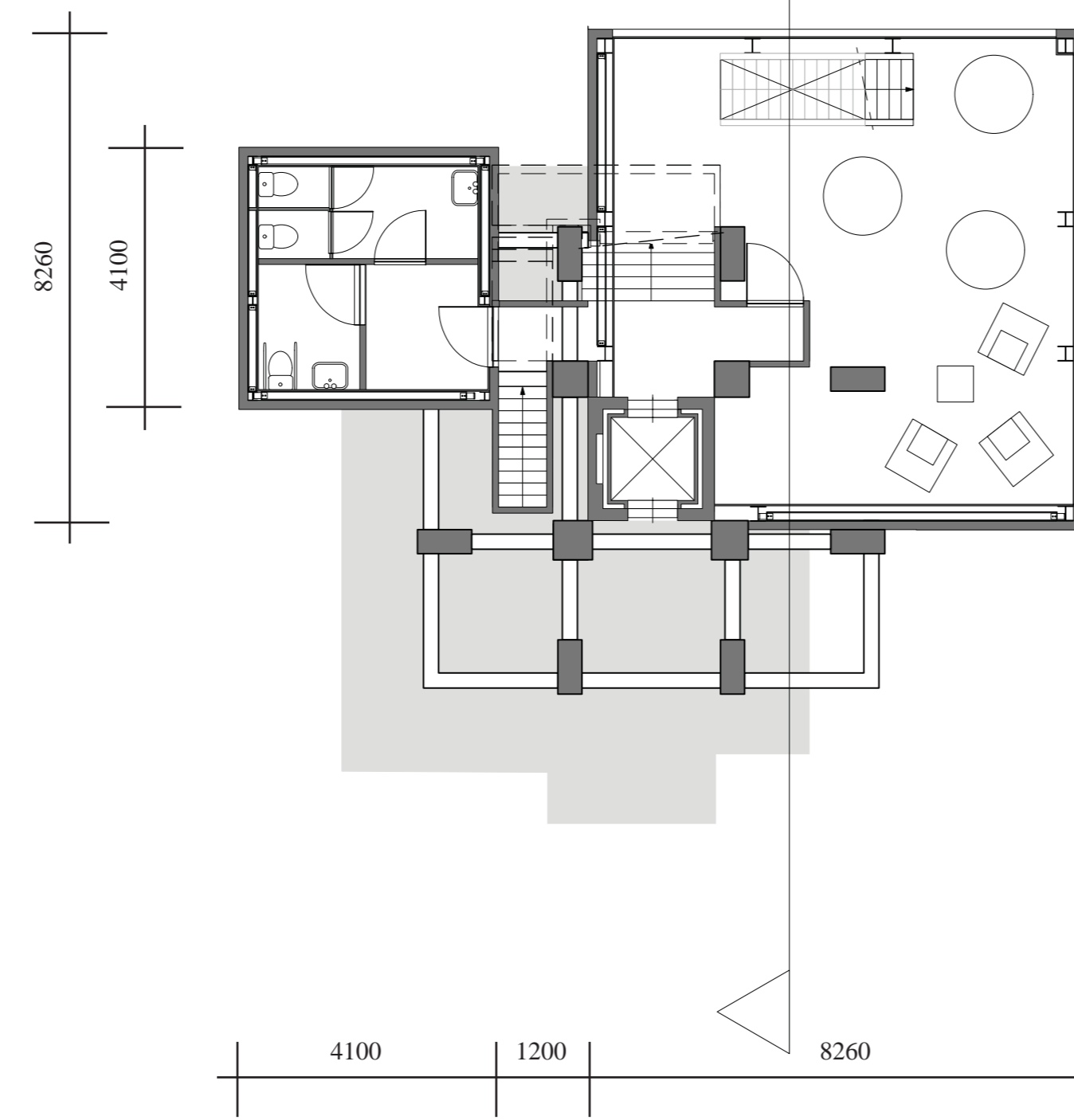
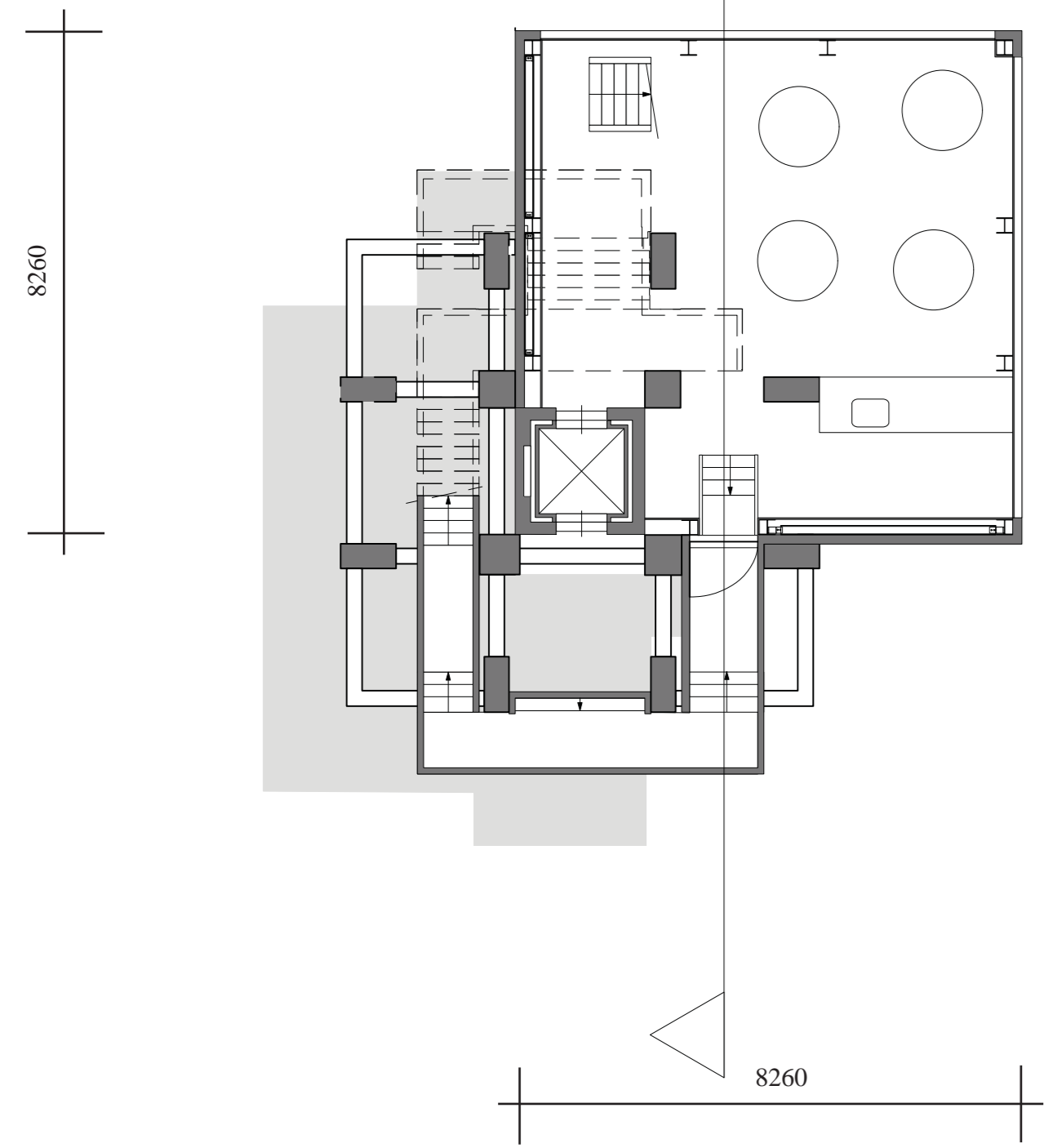
1. fundering; installatieruimte
2. entree, receptie
3. VIP-ontvangst
4. tussenverdieping
5. horeca benedenverdieping
6. horeca bovenverdieping
7. personeelsruimte, opslag
8. lesruimte
9. tank
10. installatieruimte, tank
11. kleedruimte, tank

900	1430	400	2300	400	1430	900
900	1330	600	2100	600	1330	900

700	1630	400	2300	400	1630	700
700	1530	600	2100	600	1530	700

700	1630	400	2300	400	1630	700
700	1530	600	2100	600	1530	700

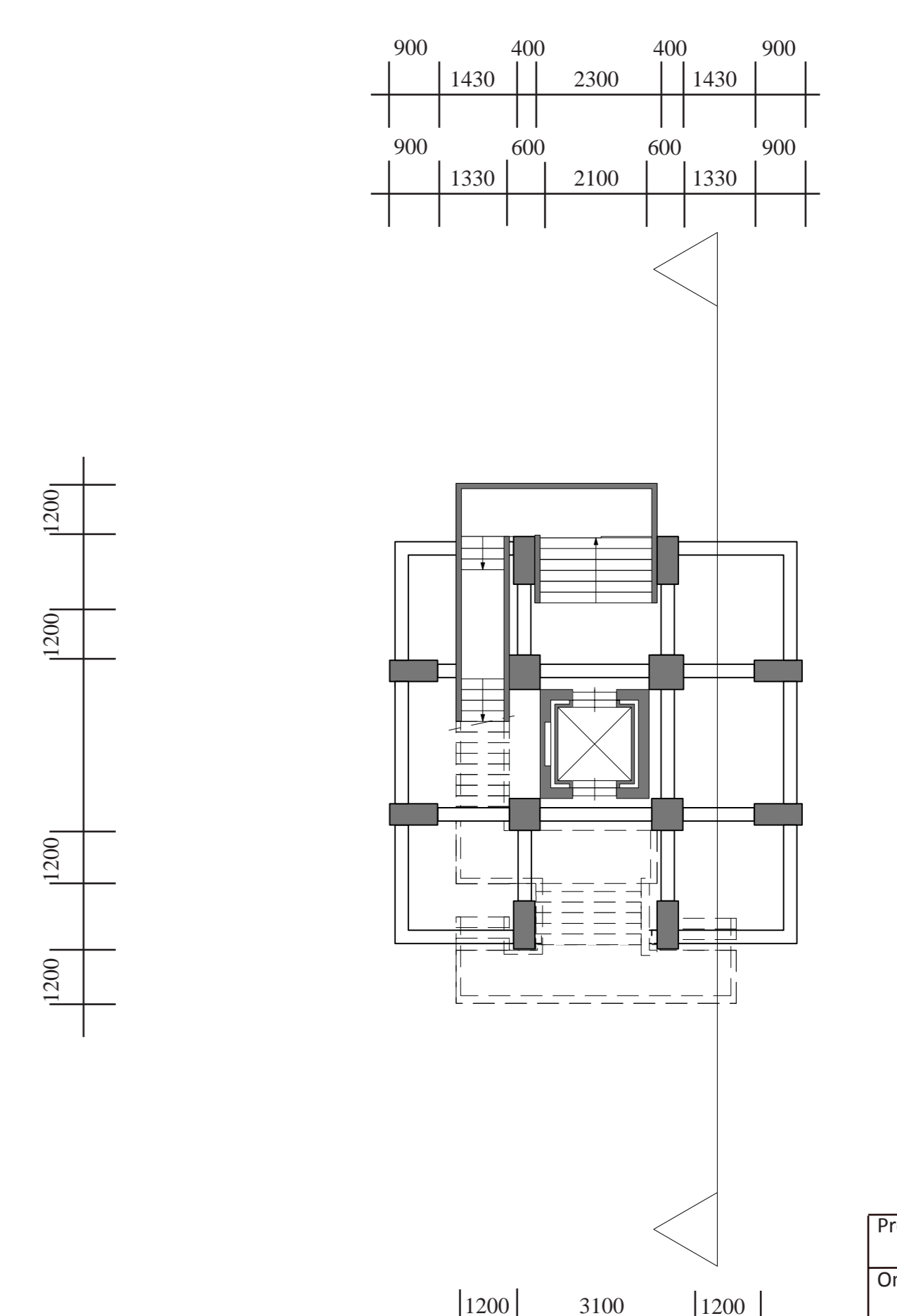
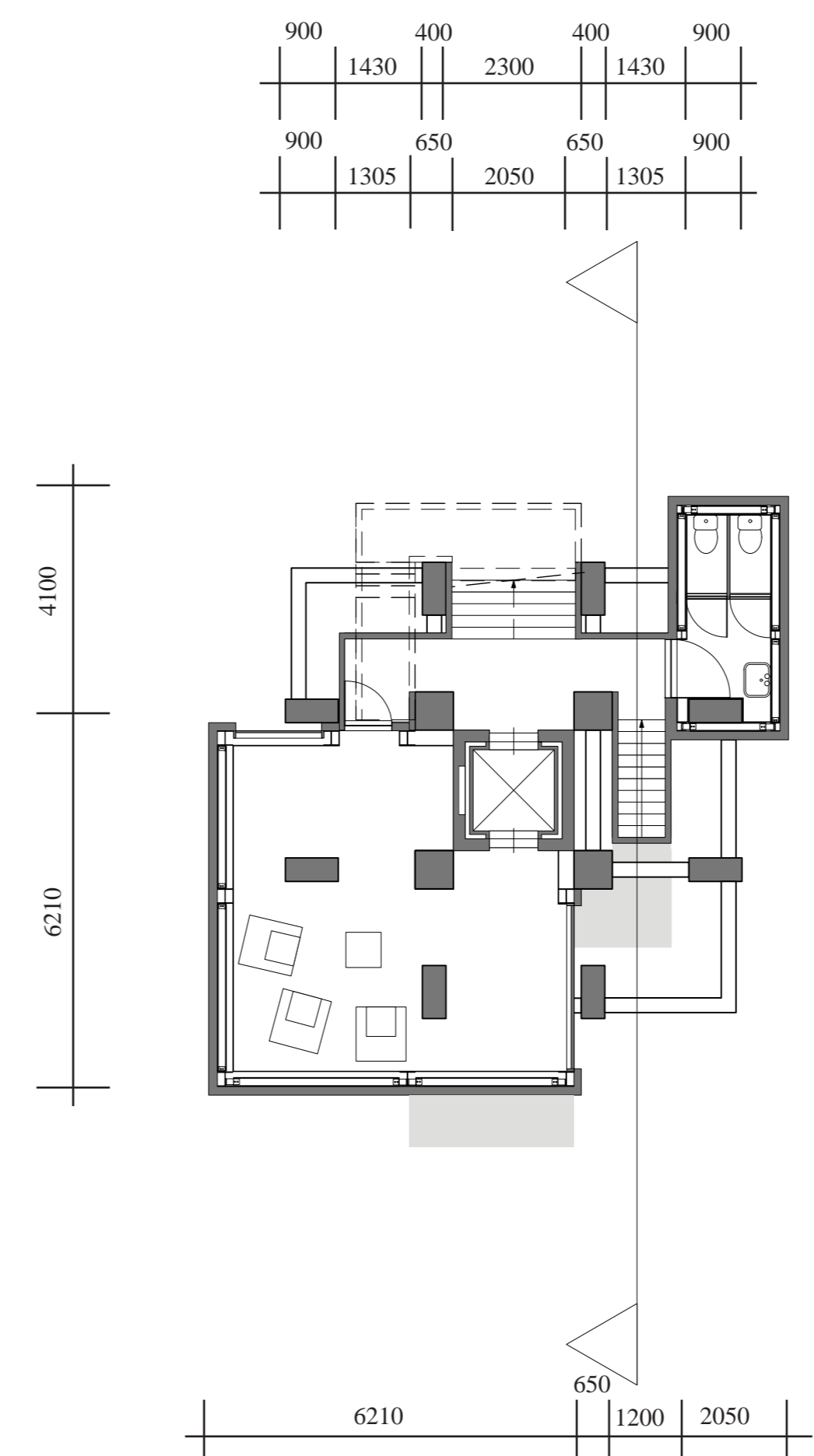
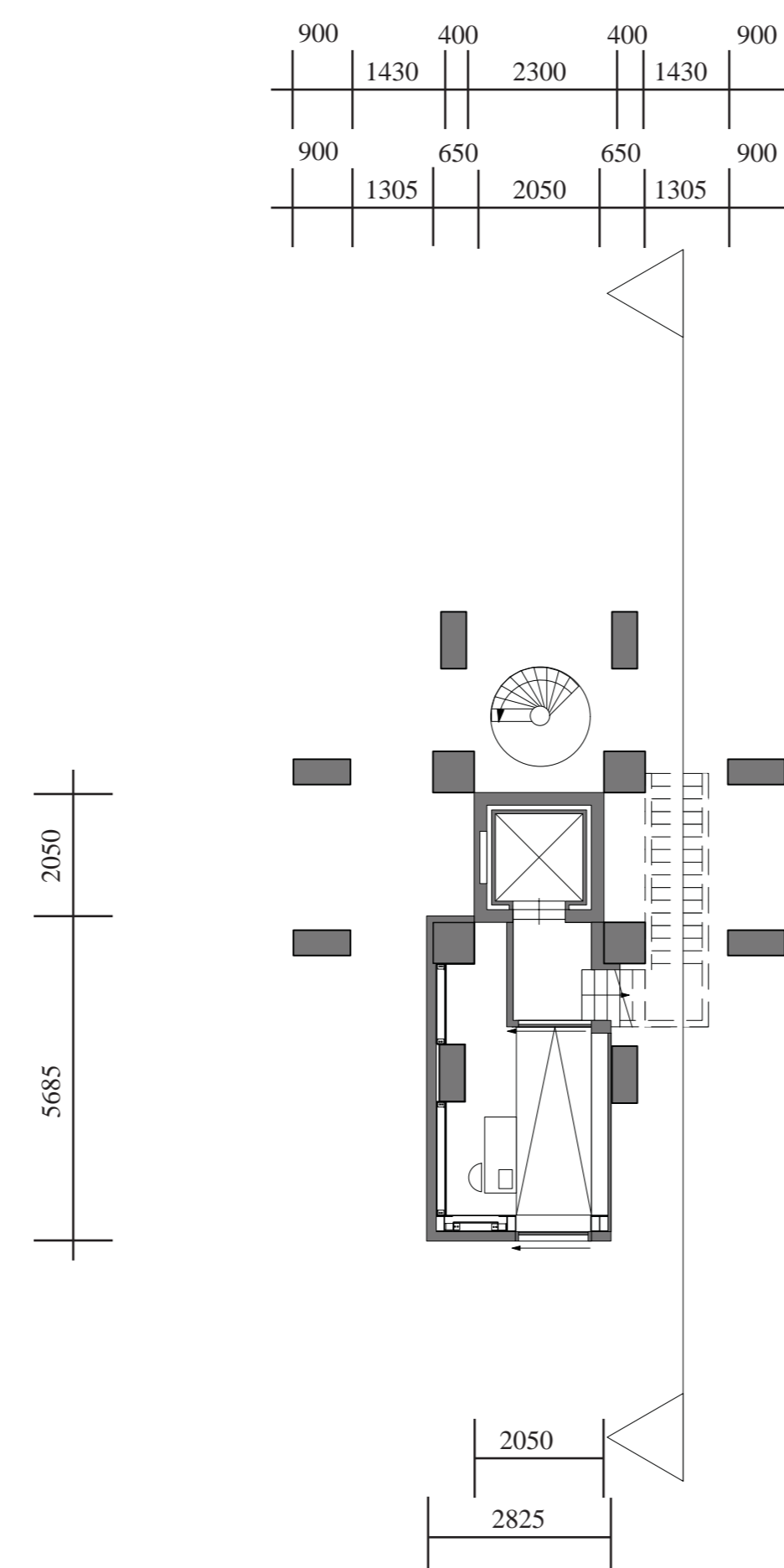
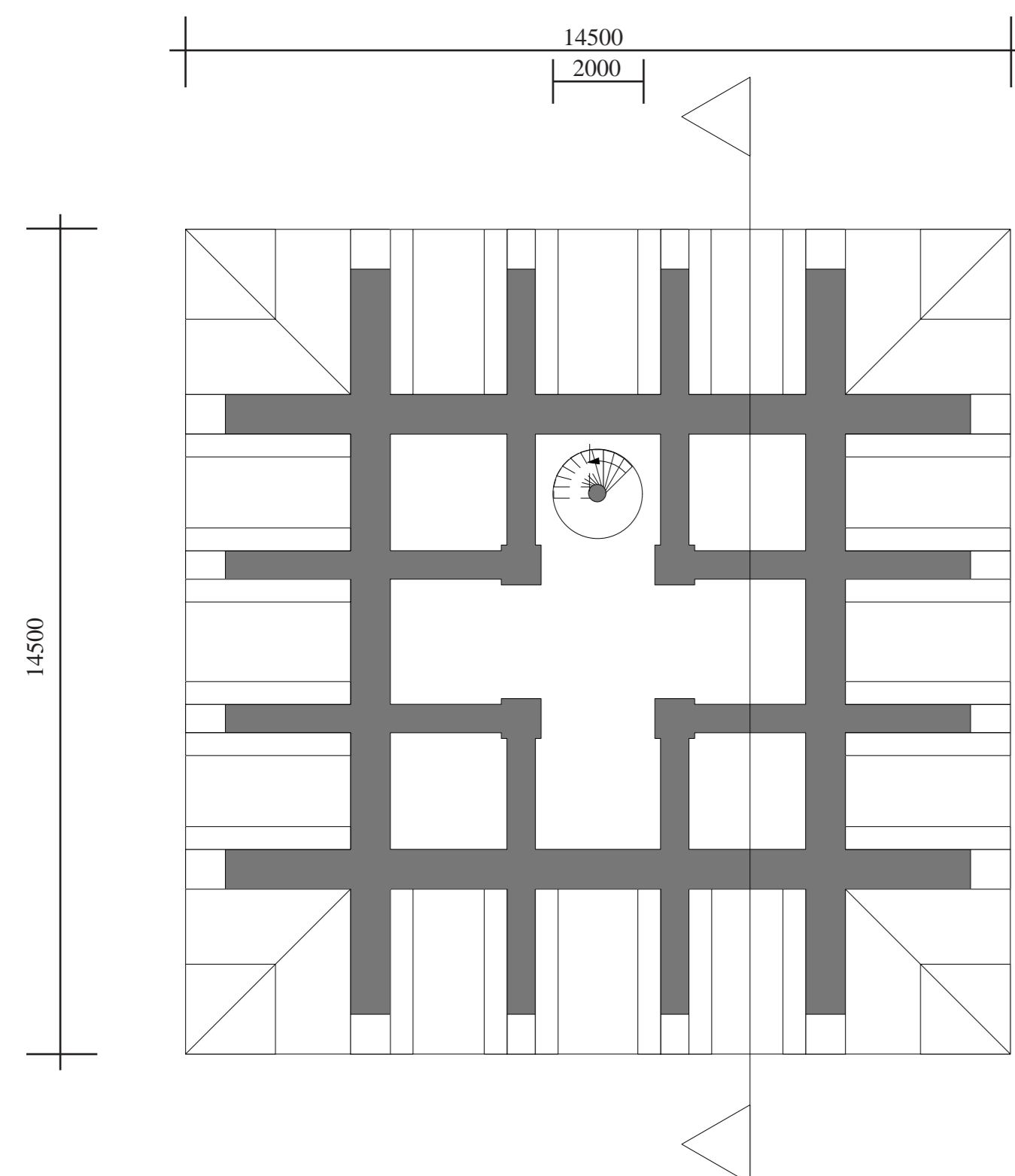
700	1630	400	2300	400	1630	700
700	1230	600	2100	600	1530	700

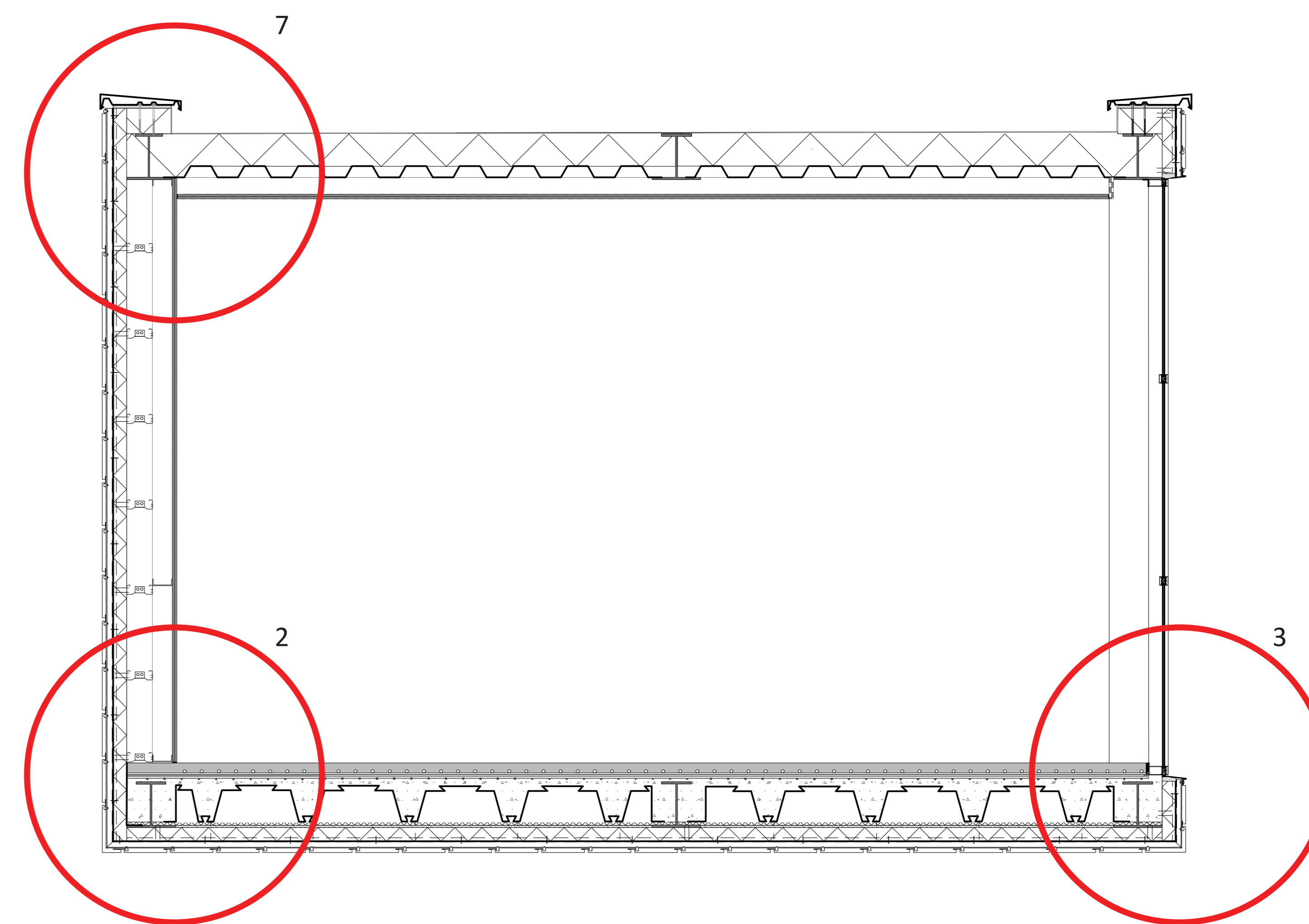
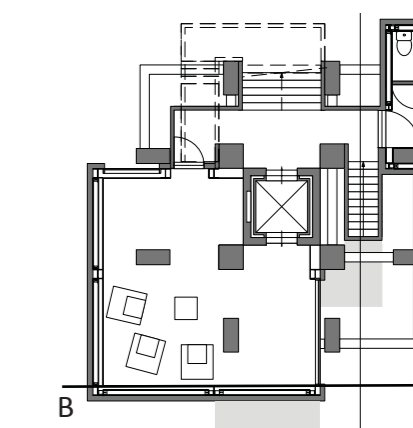
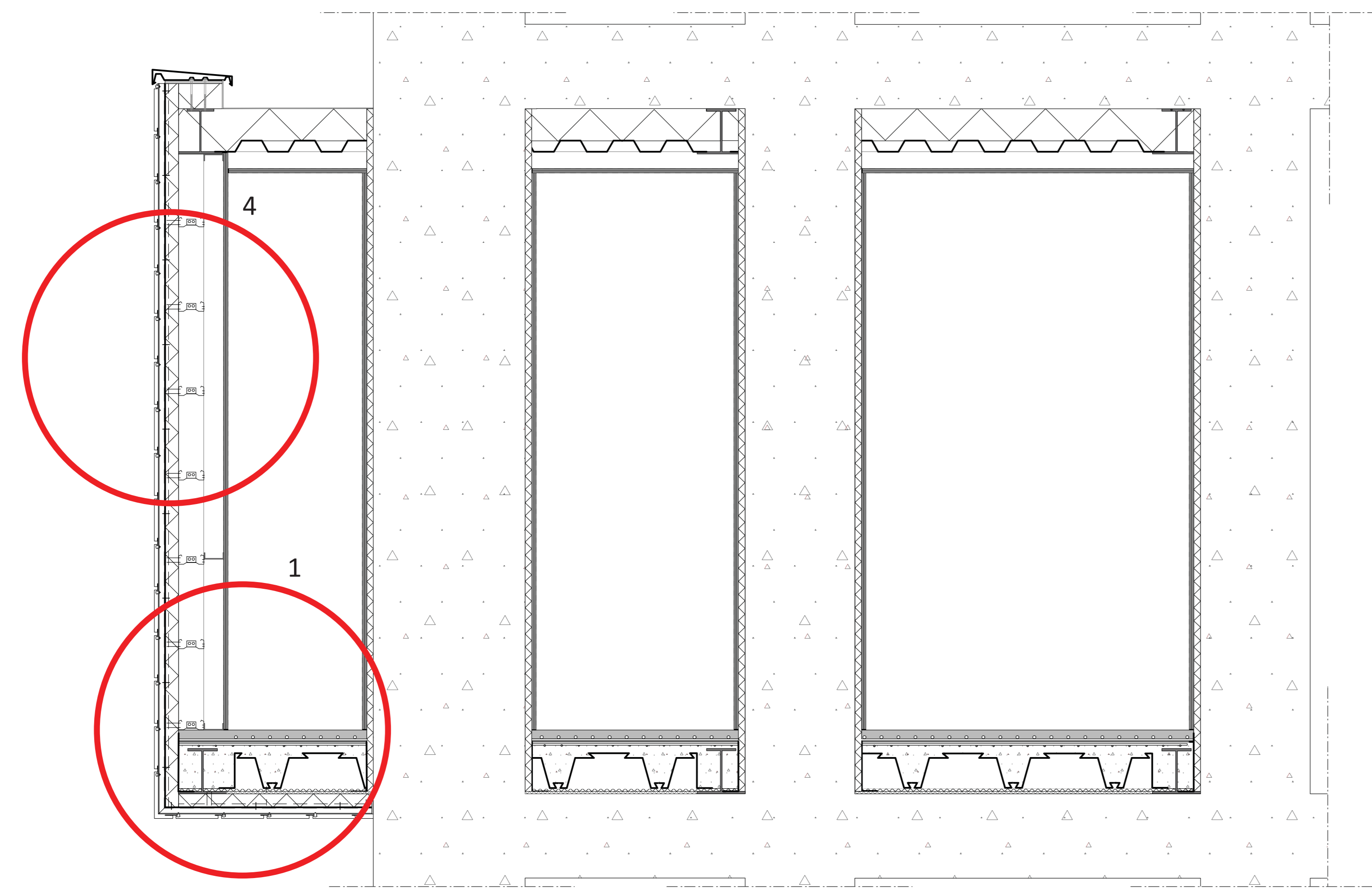
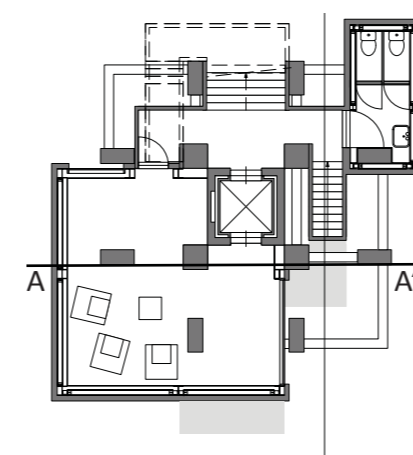


900	1430	400	2300	400	1430	900
900	1305	650	2050	650	1305	900

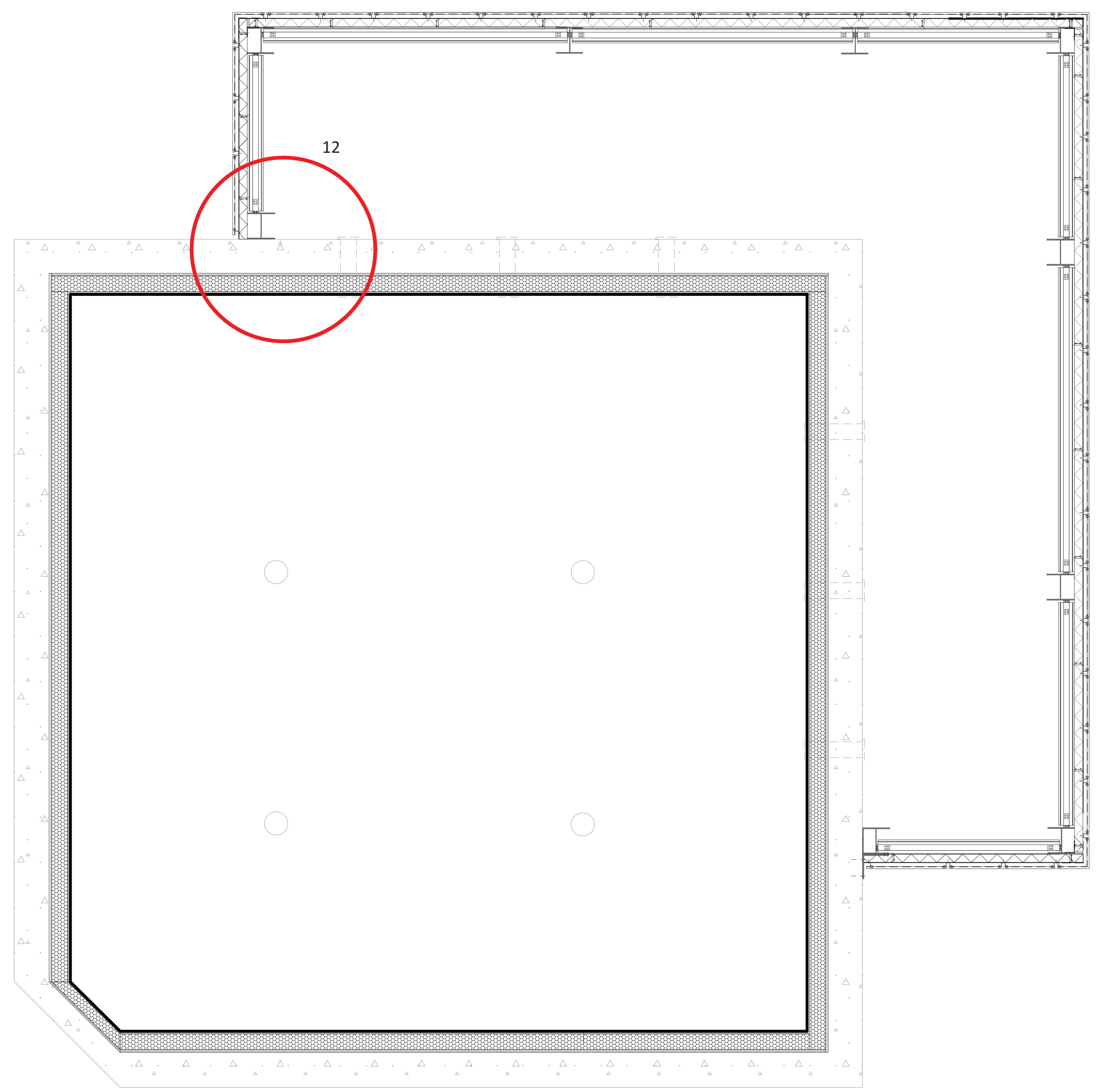
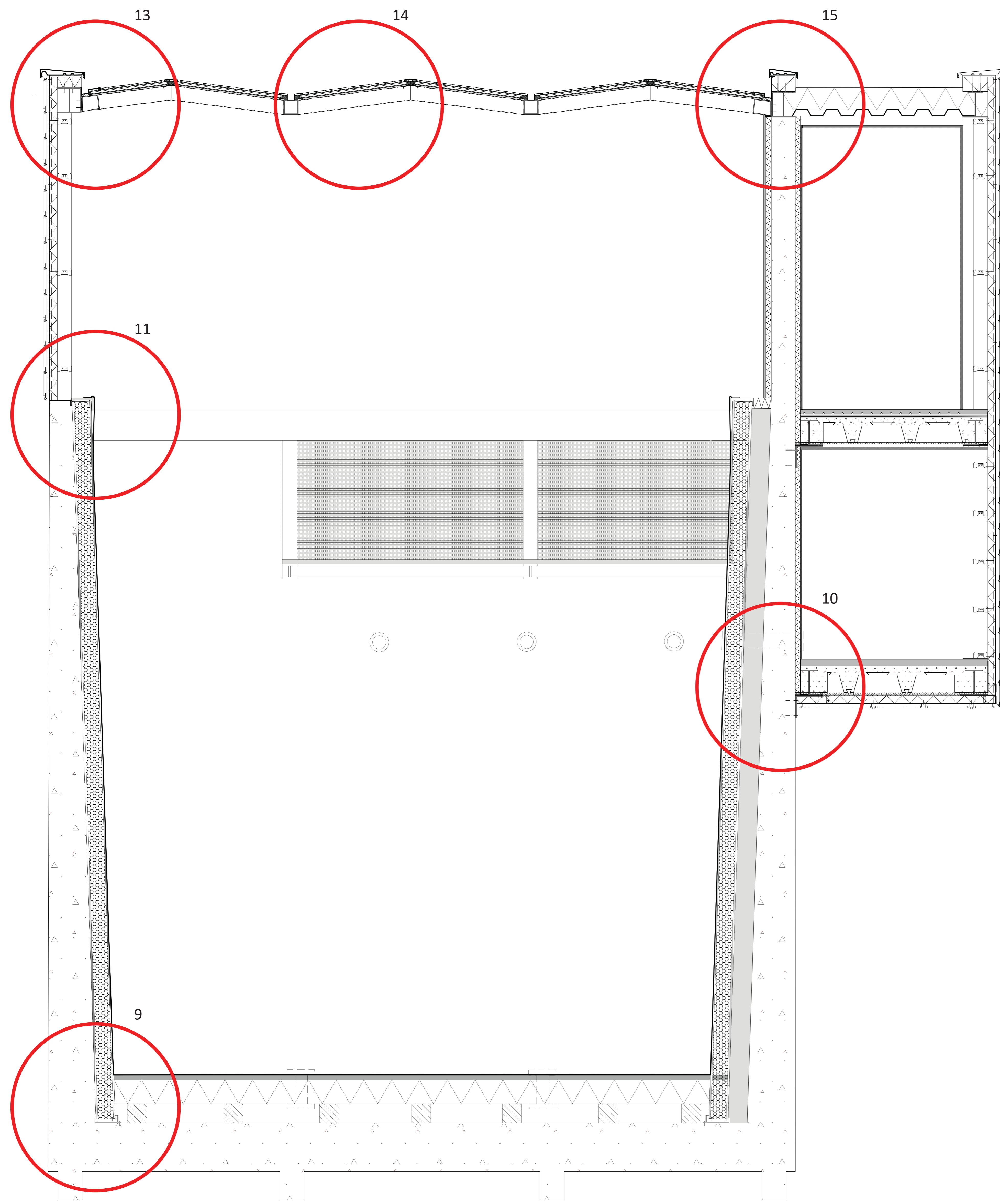
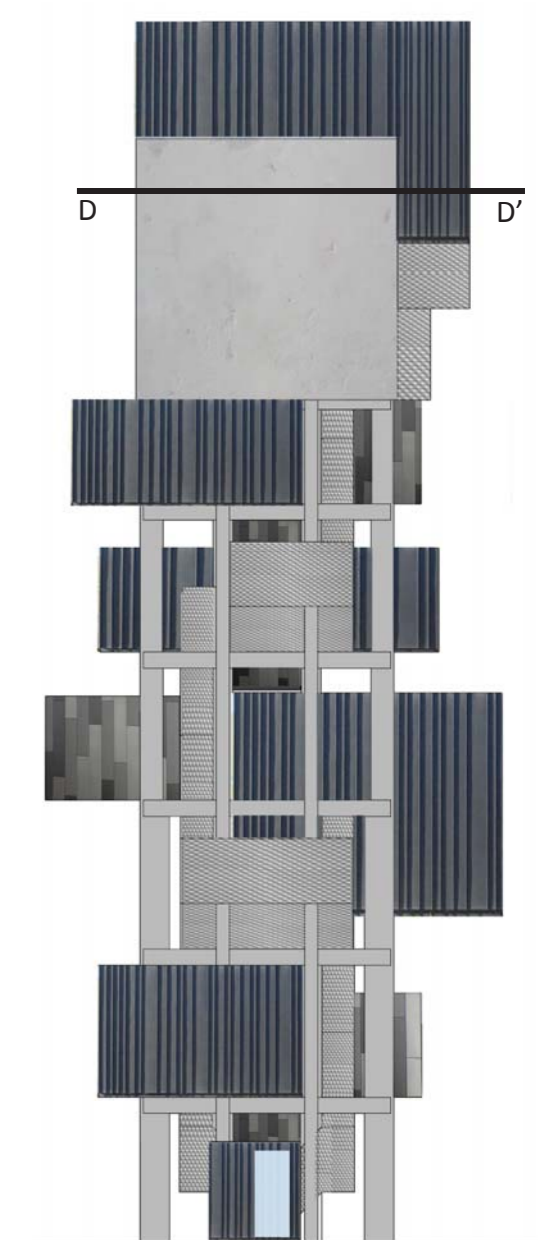
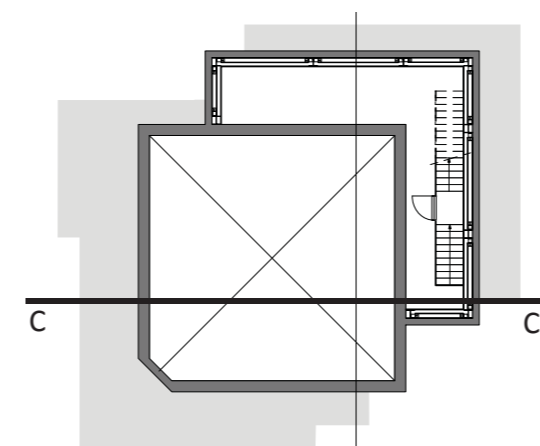
900	1430	400	2300	400	1430	900
900	1305	650	2050	650	1305	900

900	1430	400	2300	400	1430	900
900	1330	600	2100	600	1330	900

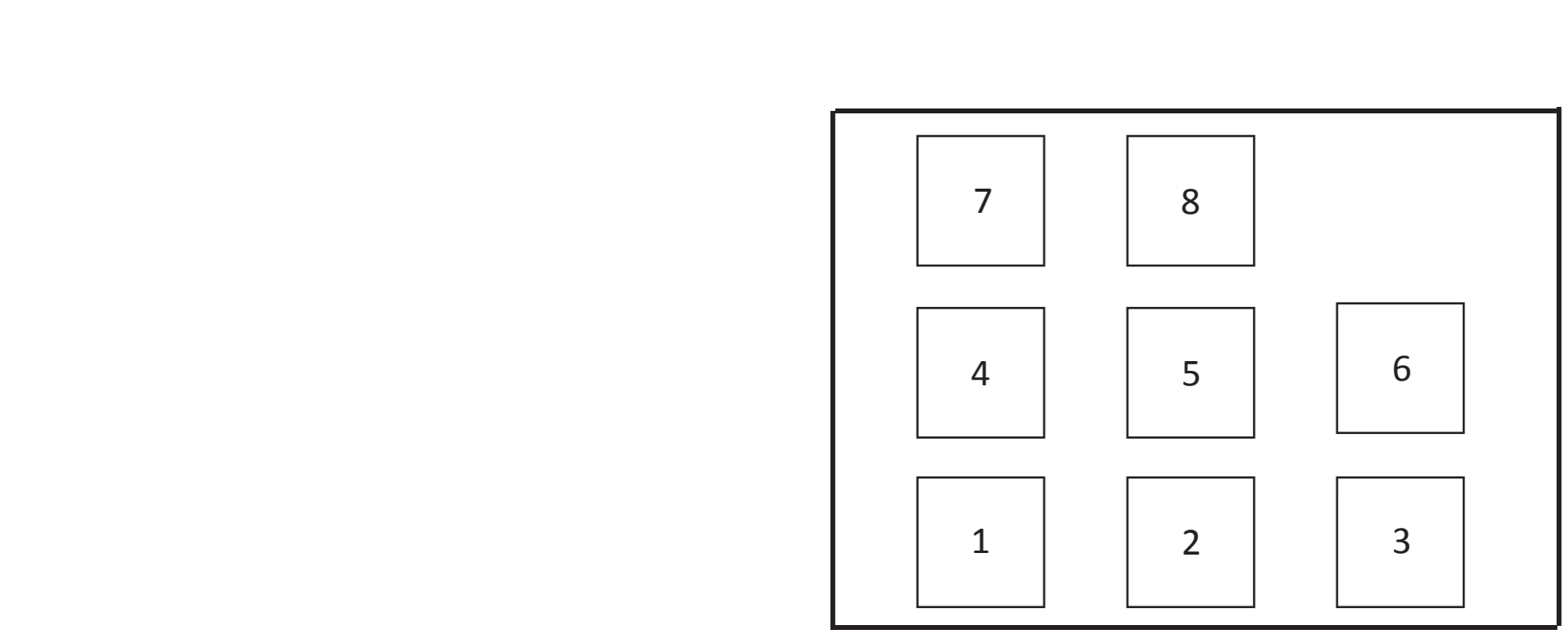
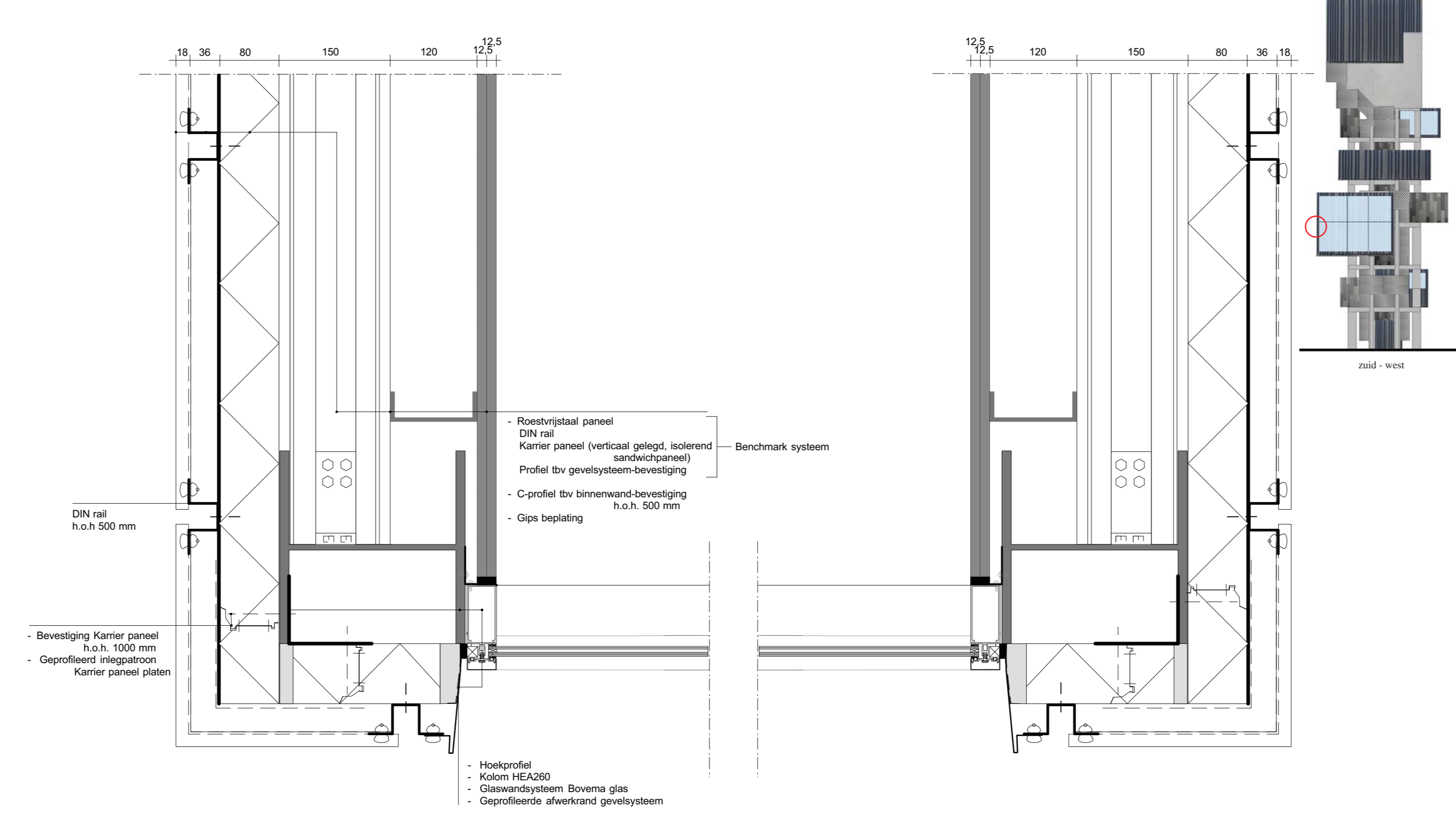
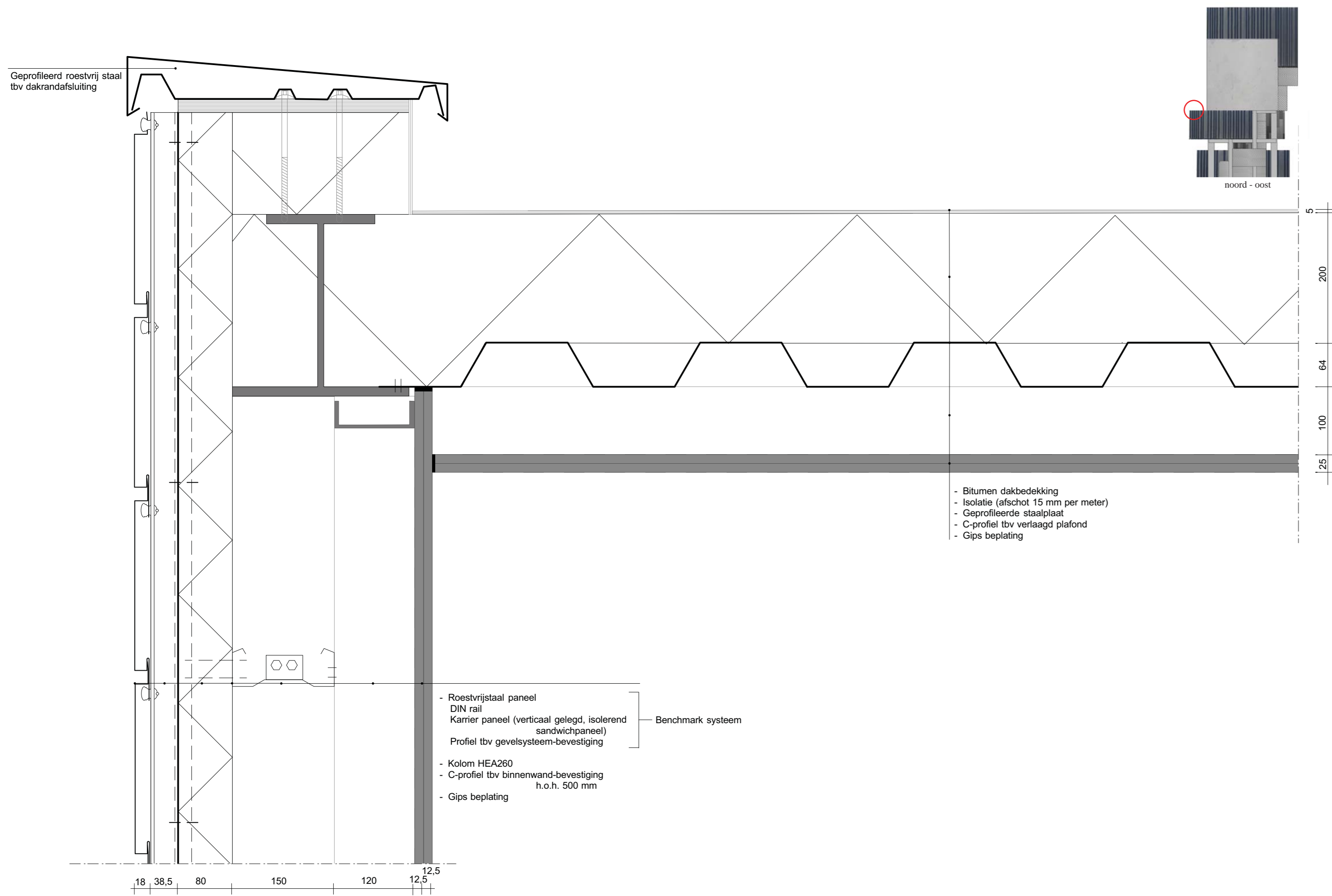




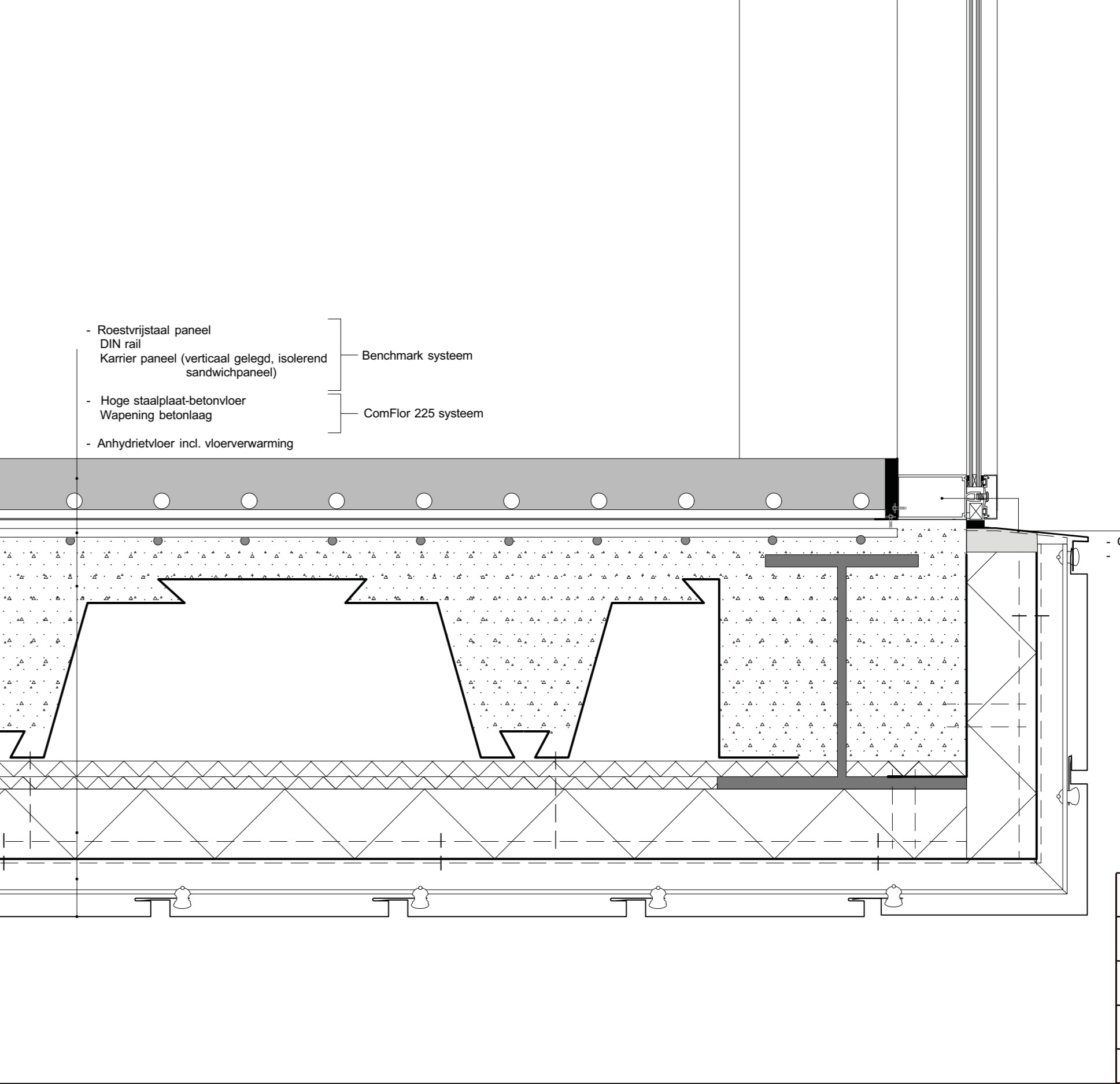
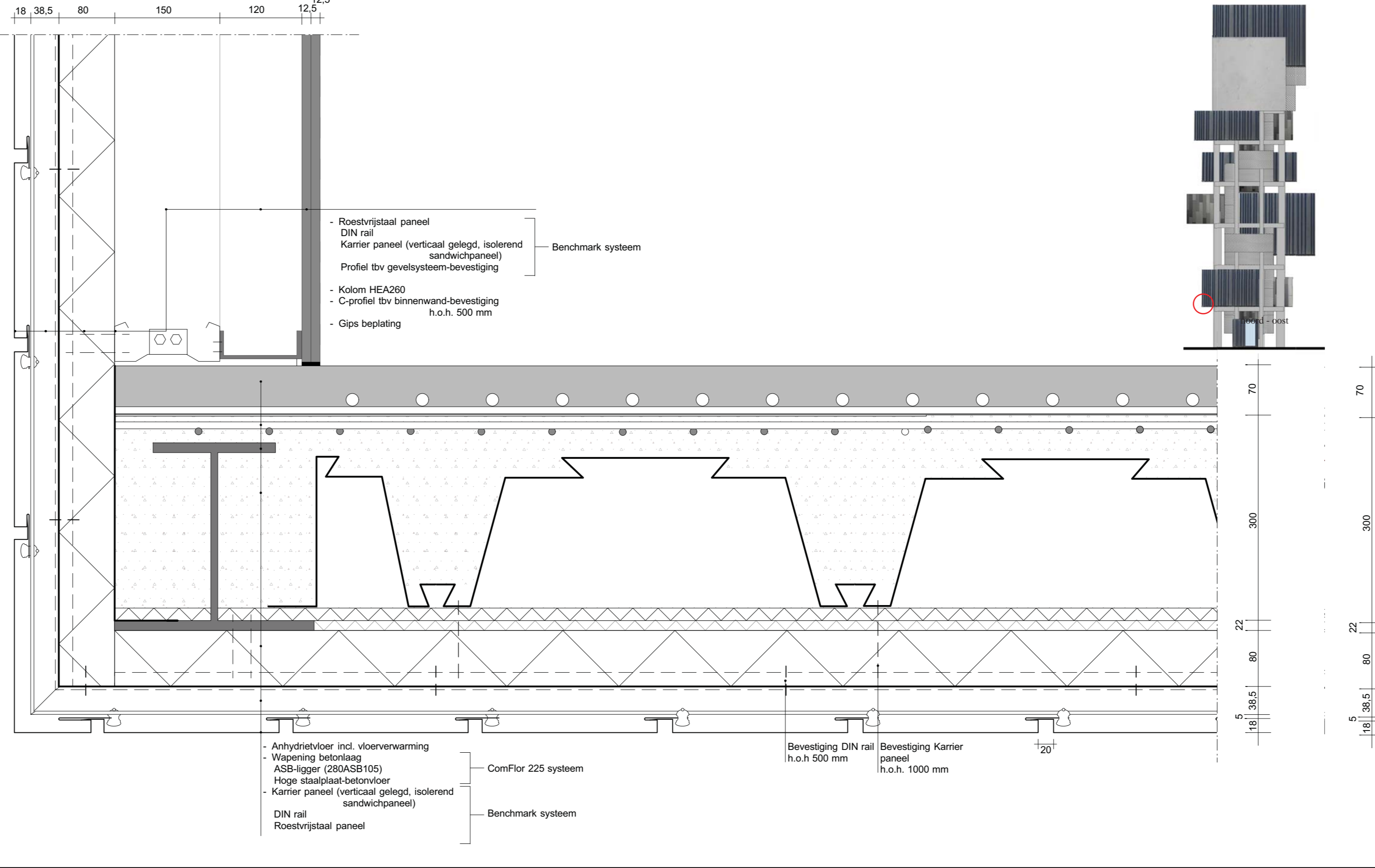
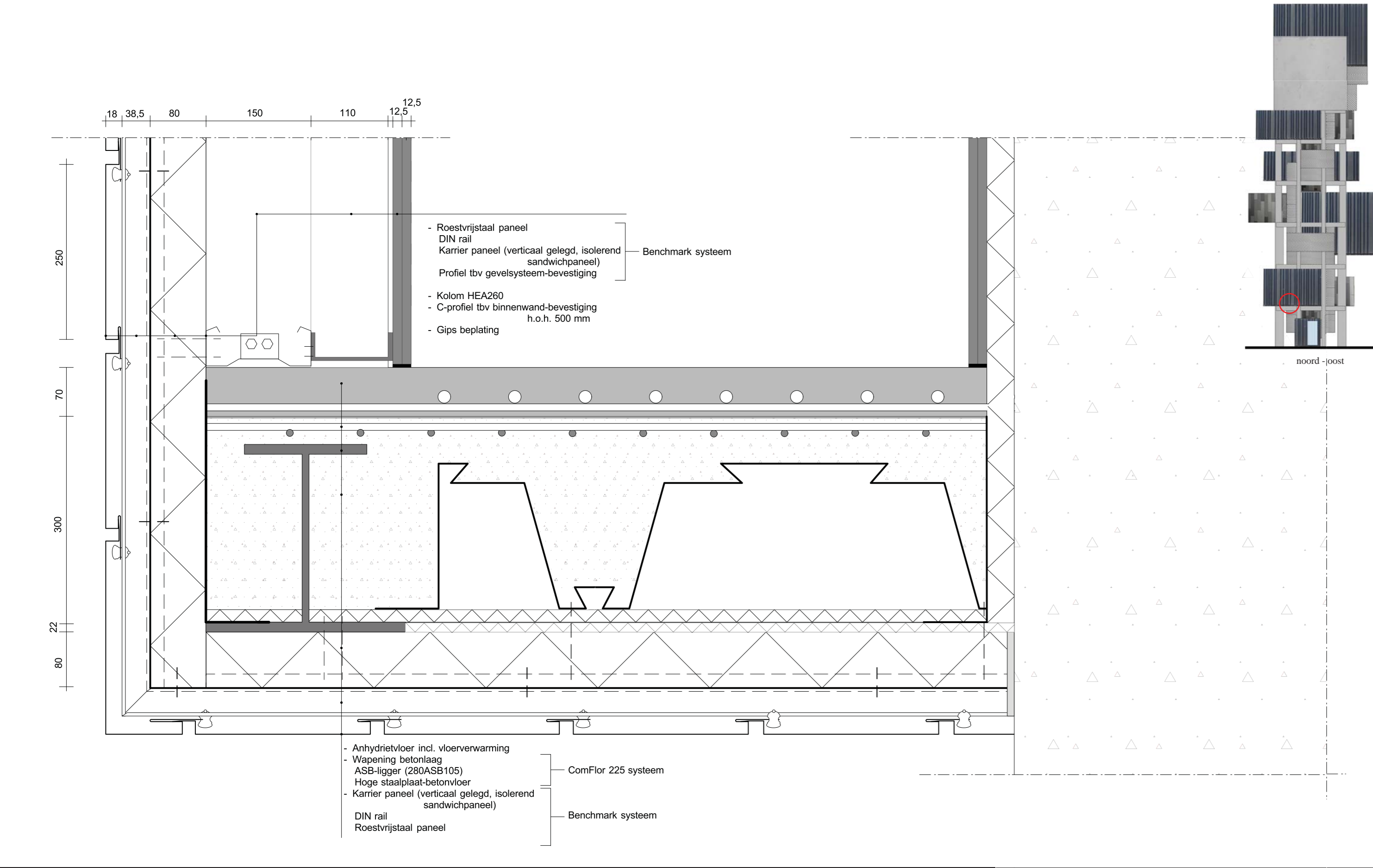
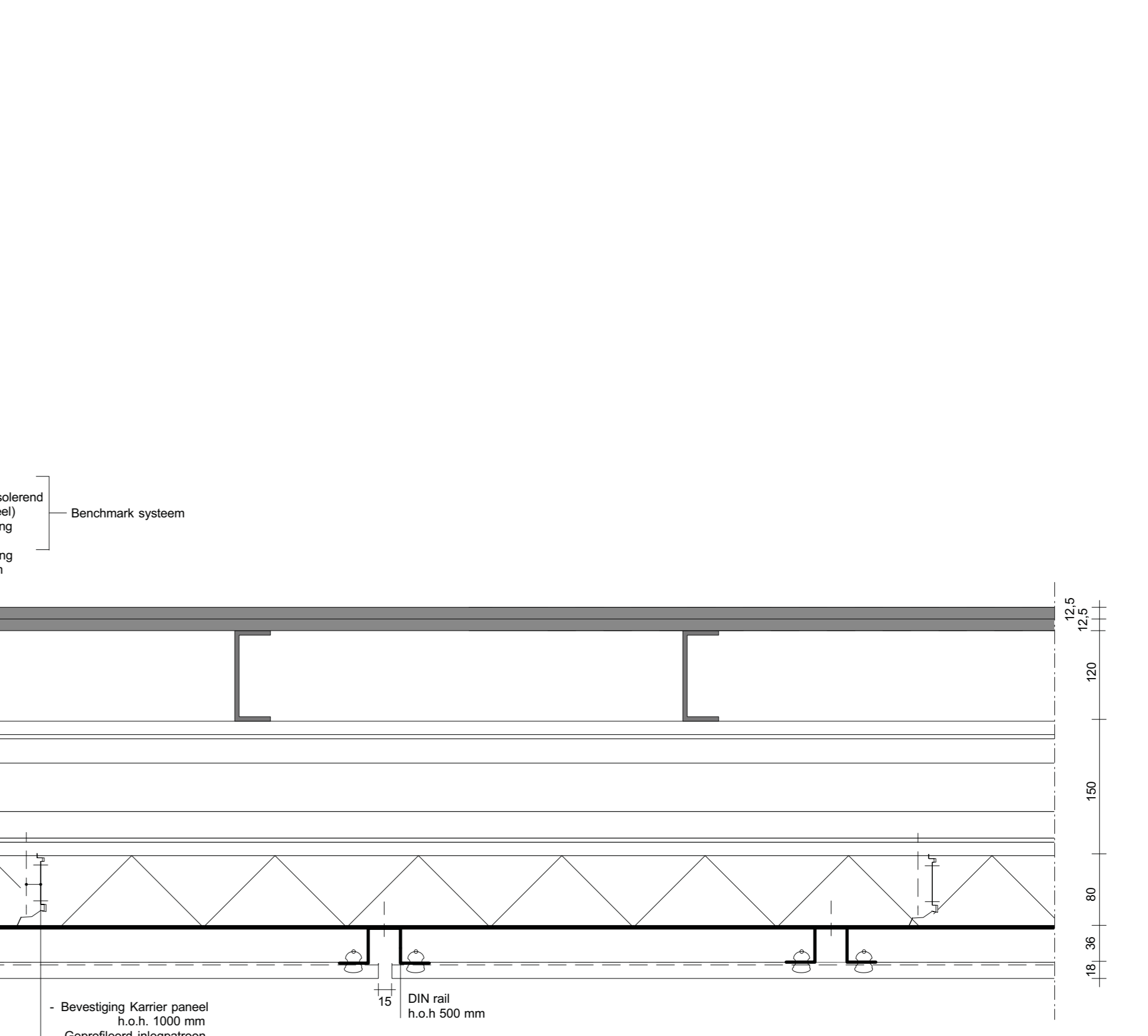
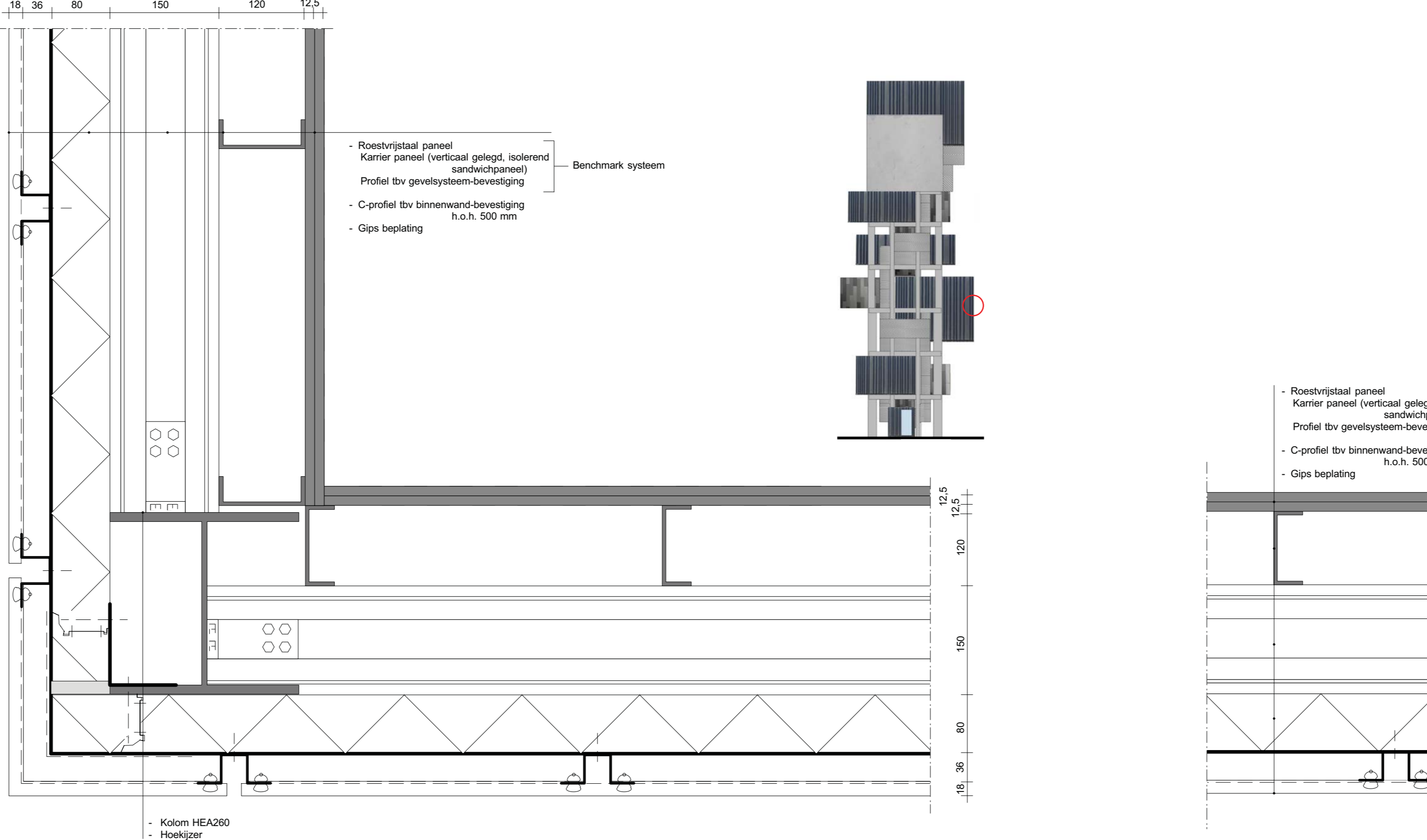
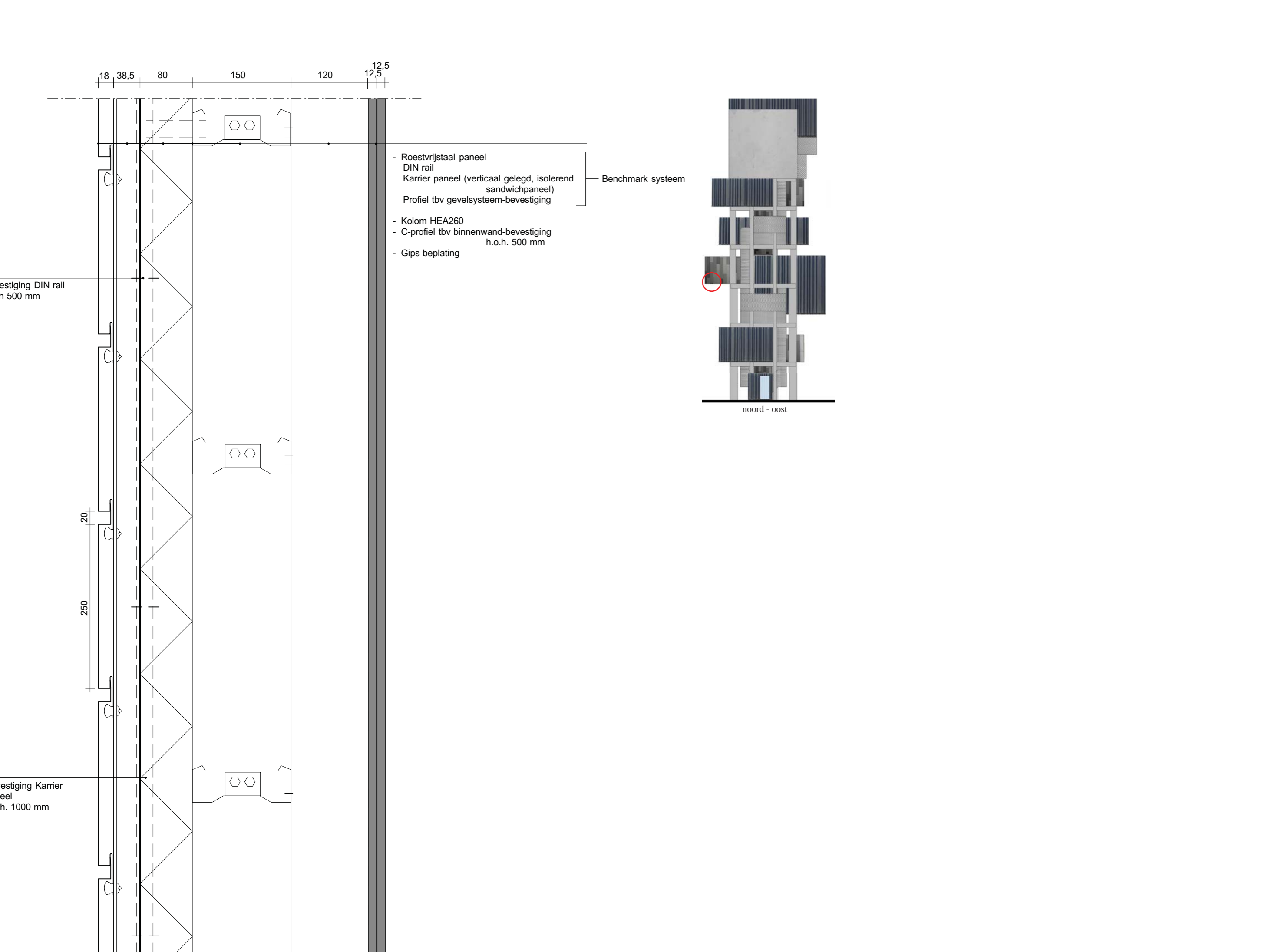
Project	Herbestemming Watertoren Doetinchem
Onderwerp	technische doorsneden VIP-ontvangst
Schaal	1:20
Datum	22.06.2012
Tekening	D001



Project	Herbestemming Watertoren Doetinchem
Onderwerp	technische doorsneden tank
Schaal	1:20
Datum	22.06.2012
Tekening	DD02



1. detail aansluiting vloer kolom
2. detail overstek
3. detail vloer glasevel
4. detail gevel
5. horizontaal detail hoek
6. horizontaal detail gevel
7. horizontaal detail glasevel



Project	Herbestemming Watertoren Doetinchem
Onderwerp	details
Schaal	1:5
Datum	22.06.2012
Tekening	E001